

best by: **SNEED**
Coding Solutions, Inc.

SNEED PACK

SNEED-PACK CE-30 Small Form Case Erector



Sneed Coding Help Desk:

<https://help.sneedcoding.com/>



Thank you for your purchase of the SNEED-PACK CE-30 Small Form Case Erector. In this manual you will find the basic operating and setup procedures to ensure your success with the CE-30. Please read the manual carefully before operating the equipment.

Safety Precautions



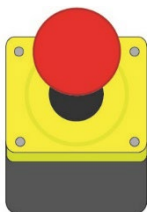
- Keep hands clear of any moving parts while the case erector is in operation and always power down prior to inspection. Failure to do so may cause bodily harm.



- Risk of electric shock, make sure the machine is properly grounded before use.



- Do not alter the mechanical or electrical systems. Any changes could result in malfunction or injury.

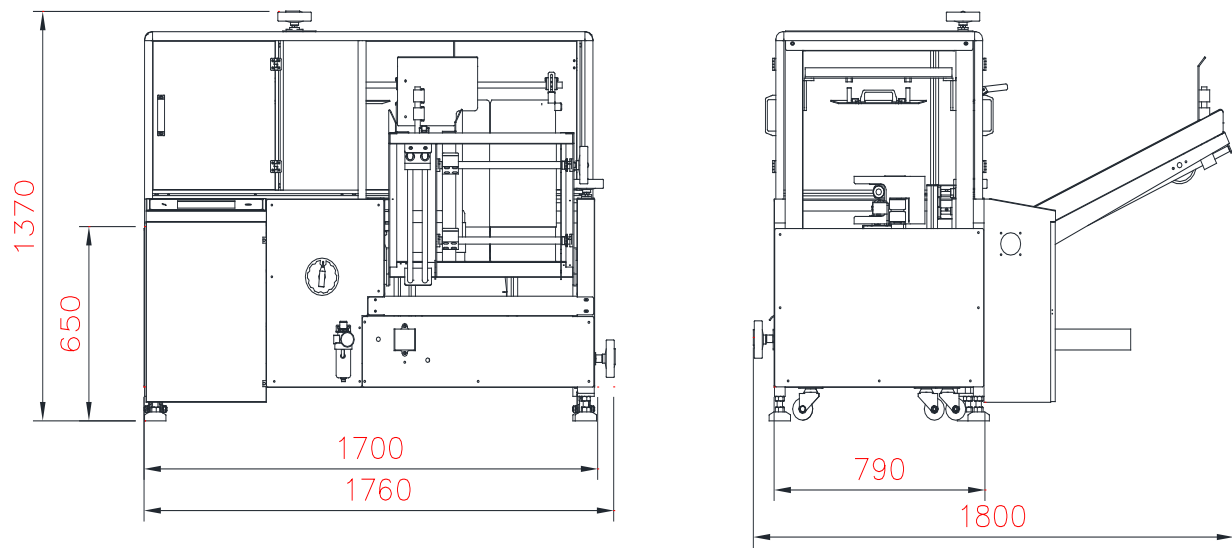


- Always turn off power to the case erector when changing the tape roll or performing maintenance.

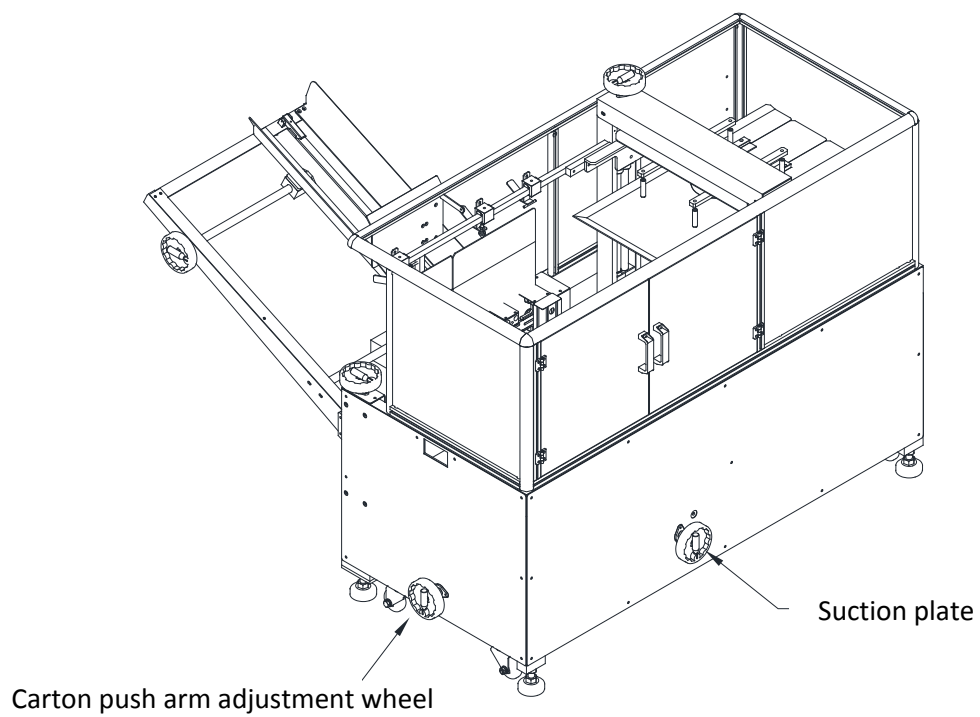
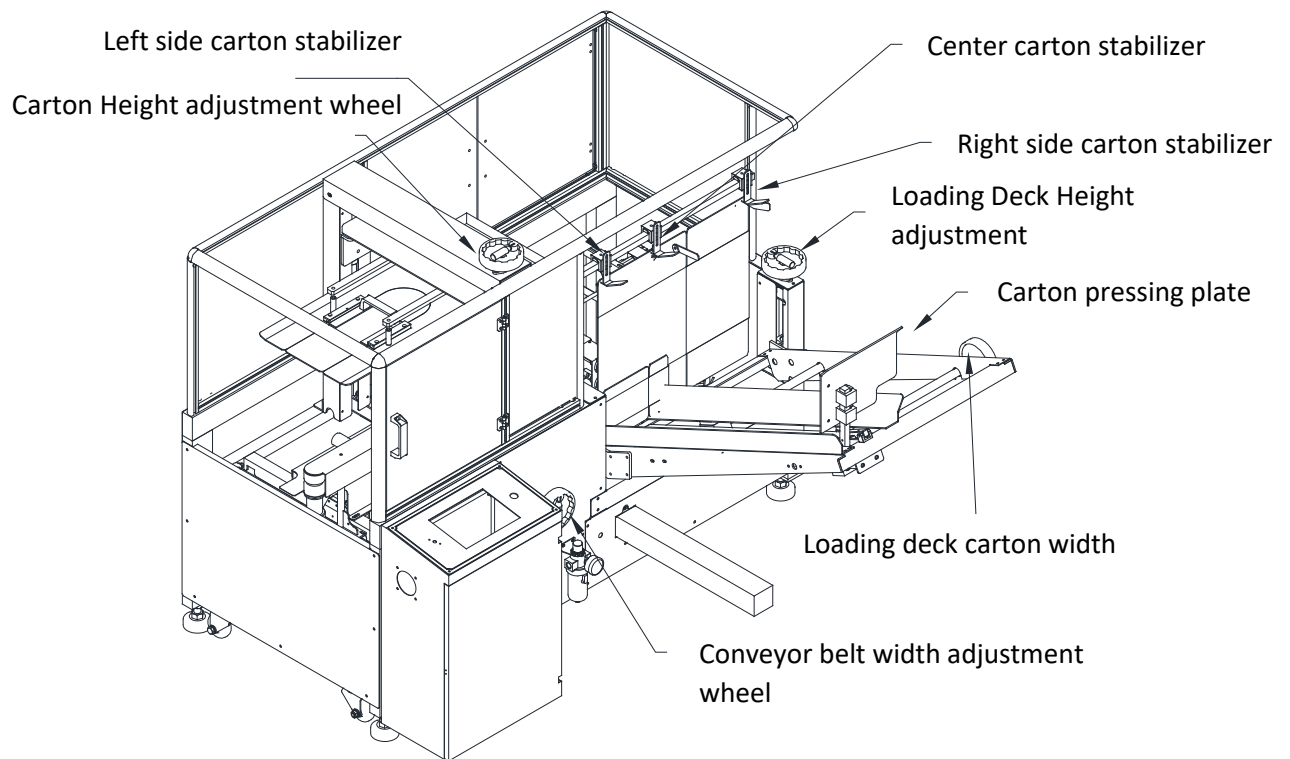
Contents

Diagram & Specifications	5
Basic Setup and Operation.....	7
Setting the Carton Dimensions	7
Loading the Cartons	10
Installing the Tape.....	12
Adjusting the Tape Position	13
Setting the Tape Tension	13
Menu Navigation.....	14
Pneumatic & Electrical Schematics.....	17
Air Line Schematic.....	17
Electrical.....	18
Exploded Views	22

Diagram & Specifications



- 📦 **Speed:** 12 cartons per/min
- 📦 **Minimum & maximum carton size:**
 - Width: 80mm – 250mm
 - Height: 100mm – 250mm
 - Length: 180mm – 250mm
- 📦 **Overall Machine size:**
 - Length: 177cm
 - Width: 173cm
 - Height: 137cm
 - Weight: 995lbs



Basic Setup and Operation

Setting the Carton Dimensions

- 1) Fold a carton to size leaving the flaps on one end open (see fig.2)
- 2) Place the carton in the output side of the machine and use the width hand wheel seen in figure 1 to set the conveyance belts to the width of the carton.
- 3) Repeat step two for the height using the height adjustment wheel on top of the machine, lowering or raising the top deck to contact the box

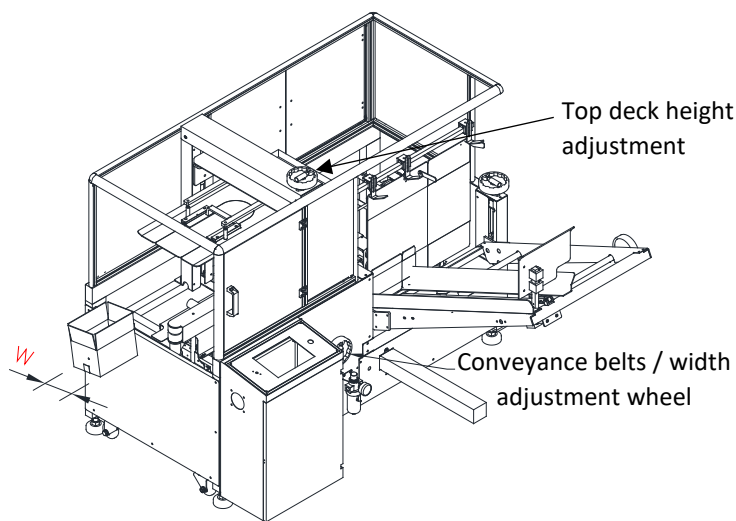


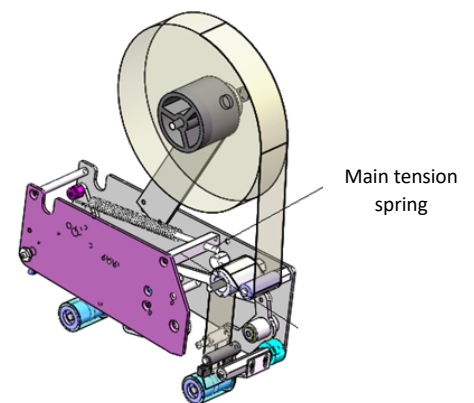
Fig.1

- 4) Next, use the hand wheel in figure 2 to adjust the suction cup plate, lining it up with the belt face as seen in Figure 3.

The carton push arm will fail to push the carton through the machine if this isn't set properly and the carton will jam.

Common issue: The belts may be set too close together and need to be spaced apart.

Fix: If the carton is stuck halfway through the tape head, you will need to adjust the main tension spring on the tape head.



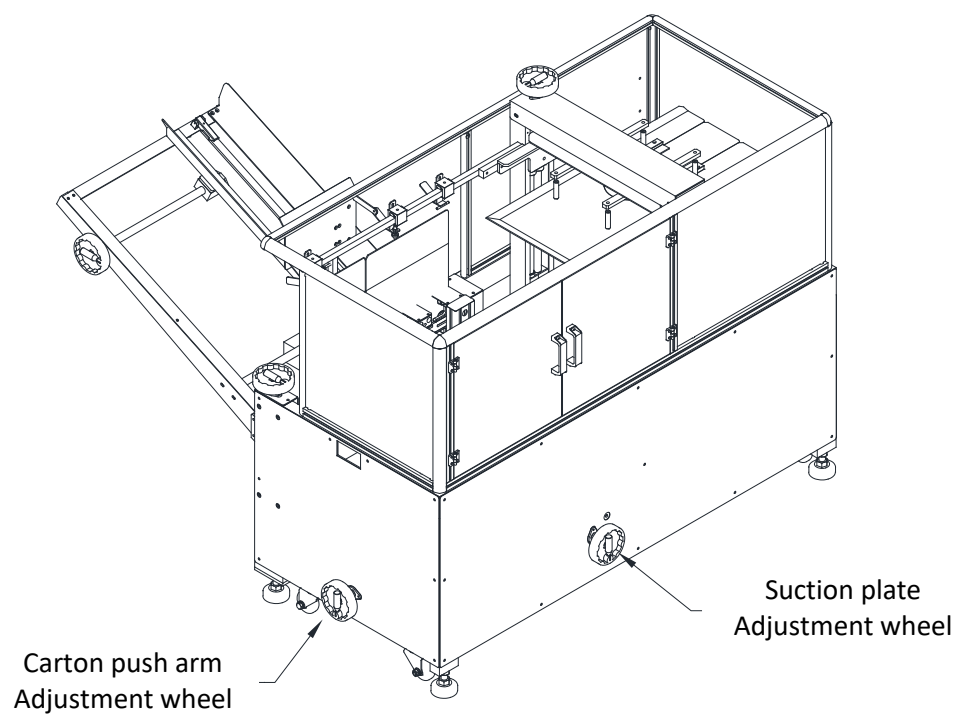


Fig. 2

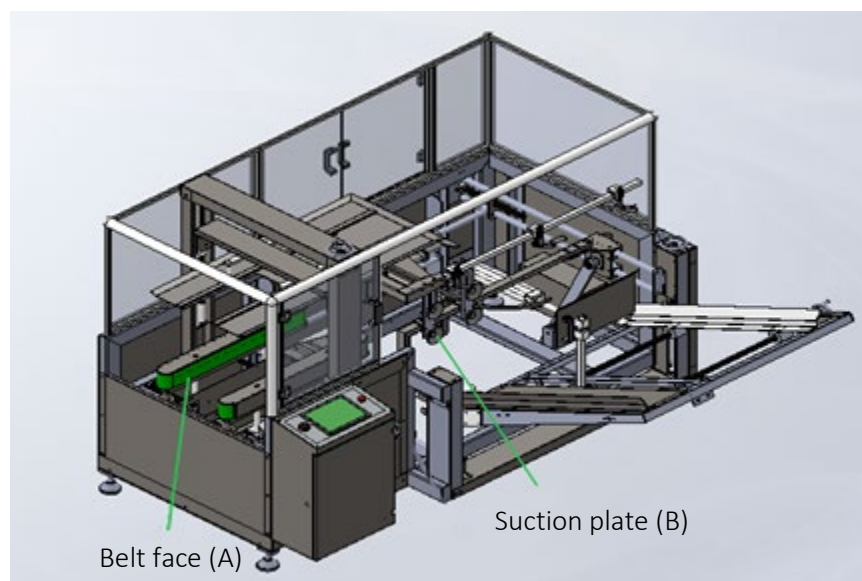


Figure 3.

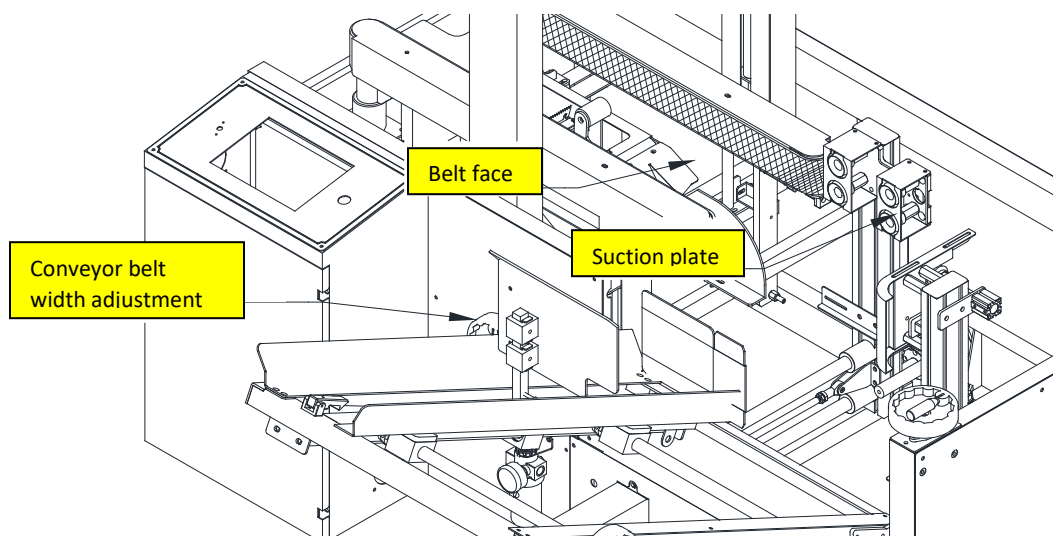


Fig. 4

🔴 The suction cups (B) and the belt face (A) should be aligned on the same vertical plane.

Loading the Cartons

- 1) Begin by placing a flat and unfolded box onto the loading deck and set the width using the hand wheel in figure 5.

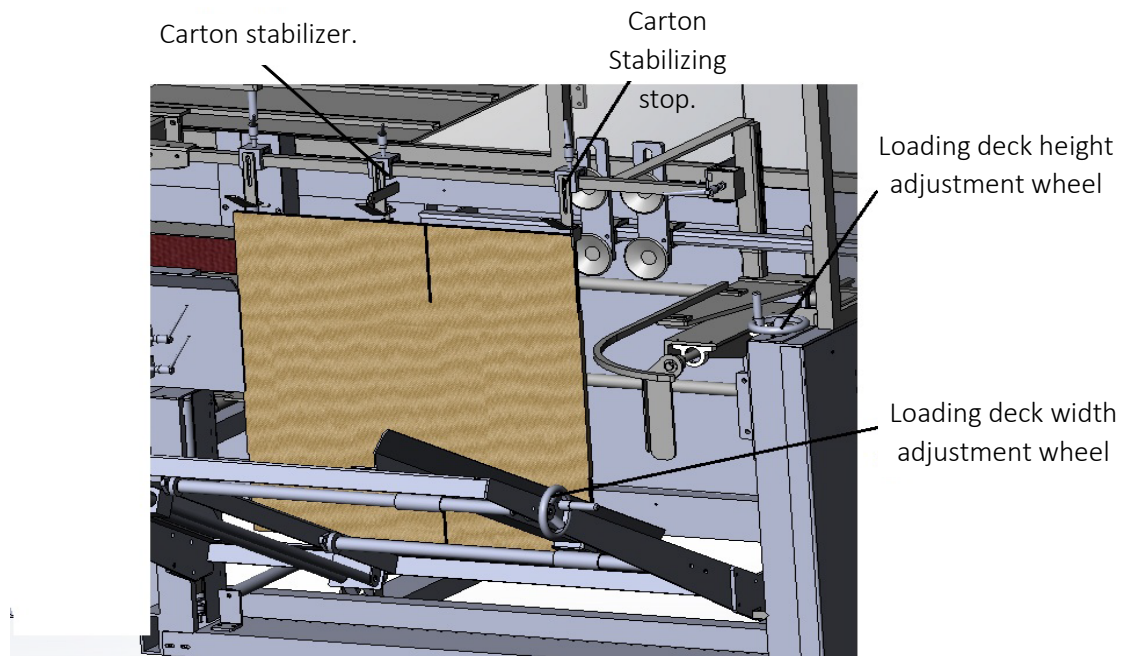


Figure 5.

- 2) Stand the flat carton up and set the height until the top of the carton contacts the carton stoppers. **Be sure that you have positioned the stabilizing stops to each end so they are not in the way. They can be set properly once you have adjusted the height. The center carton stop should be set just to the left of the folding line.**

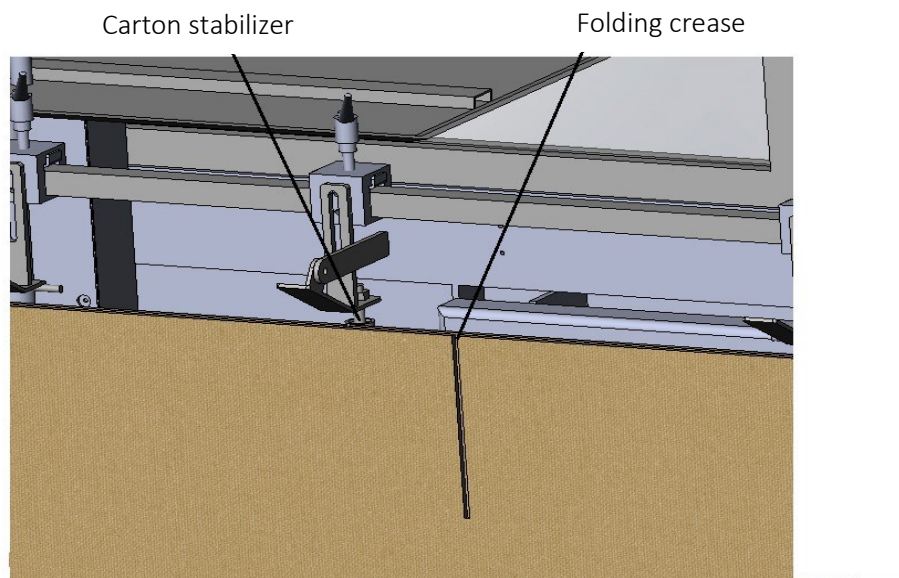
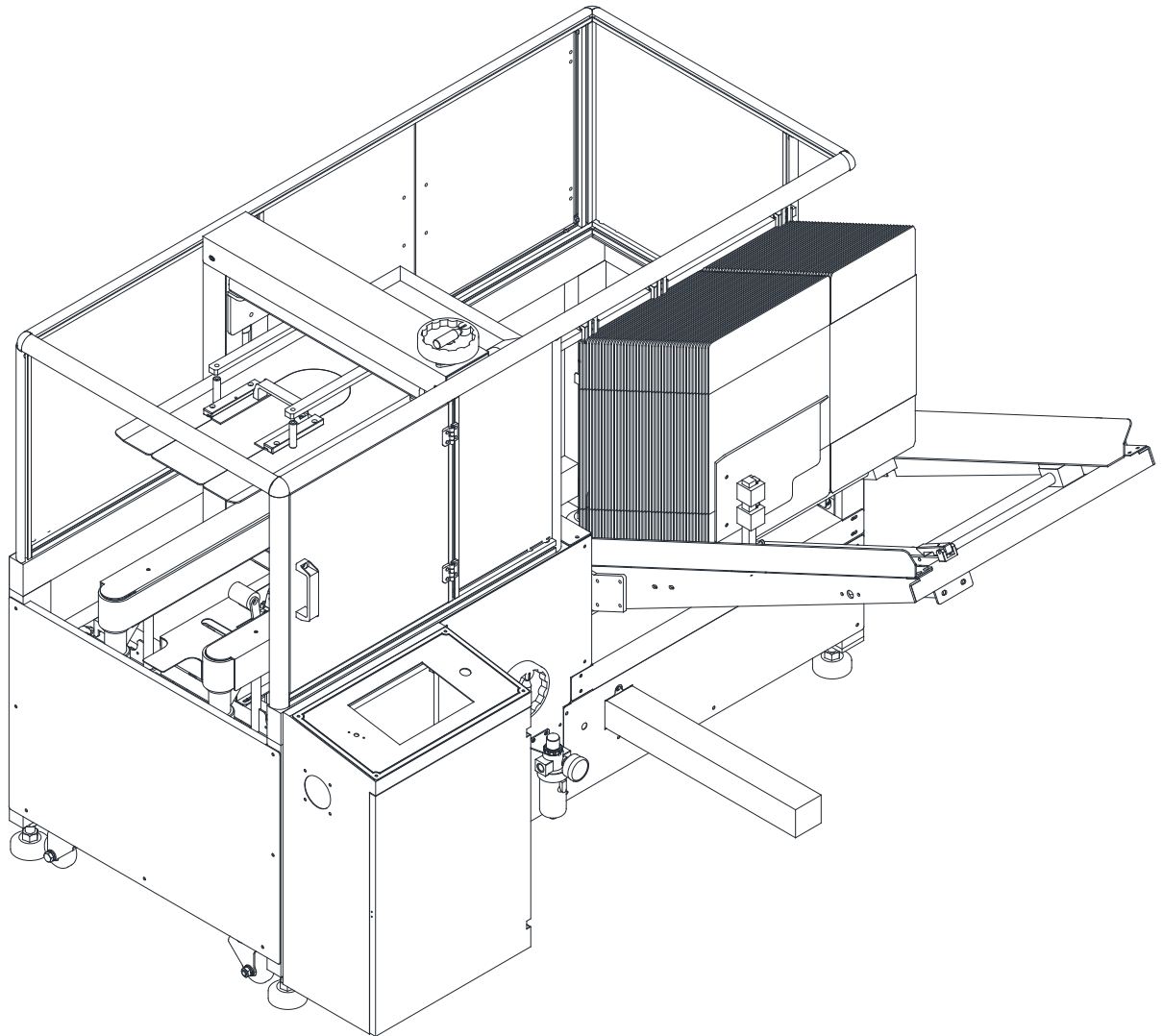


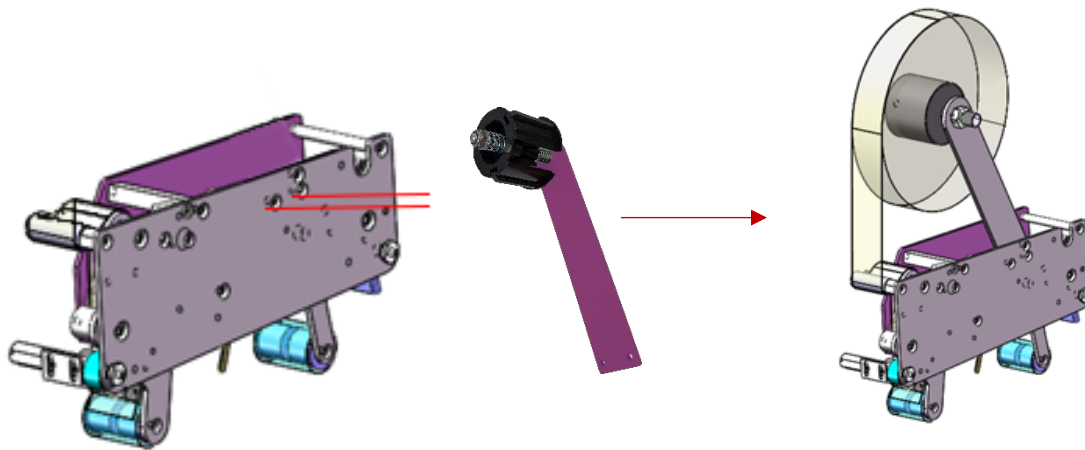
Figure 6.

- 3) Finally load your cartons onto the loading deck and release the pressure plate to hold them in place.

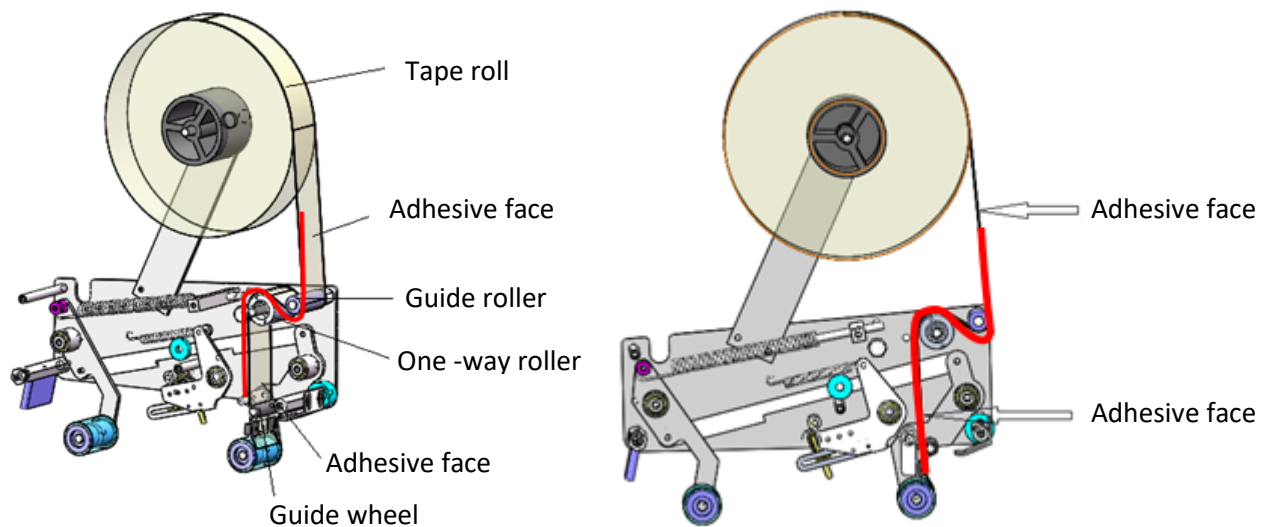


Installing the Tape

1. Begin by attaching the tape arms to each tape head using the included screws. (top and bottom)



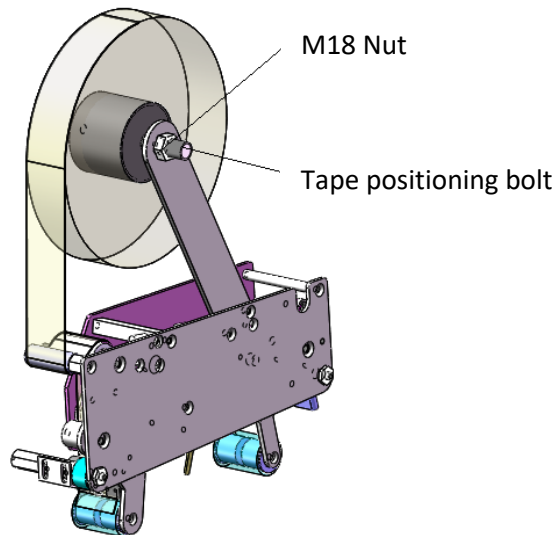
2. Next Install the tape onto the tape wheel so that when you pull the tape down the adhesive side is facing outward.
3. Now guide the tape under the first guide roller, over the one-way roller, and through the clip just above the last guide roller. **The red line shows the tape path**



Adjusting the Tape Position

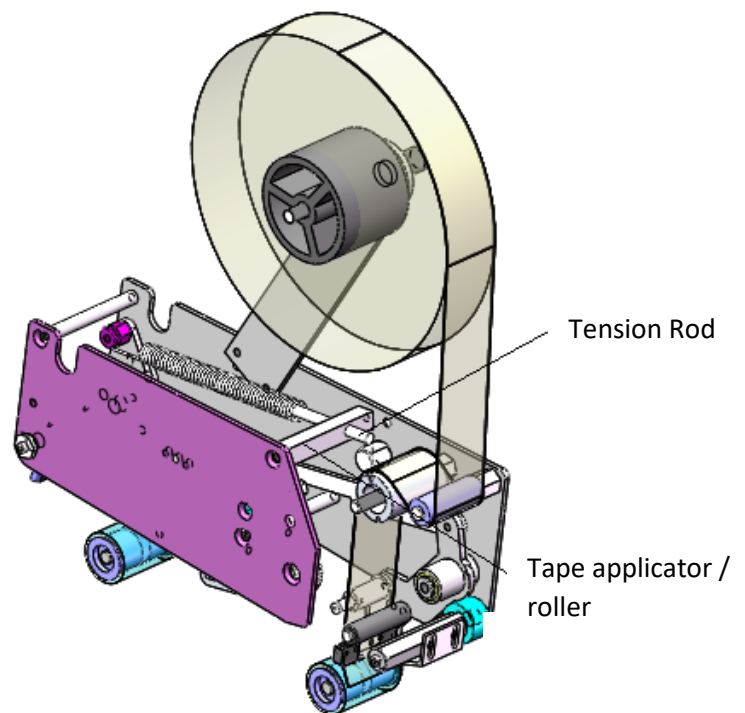
If you find that your tape is not lining up with the center of the box center, you can use the M18 nut shown in figure 6 to reposition the tape.

1. Remove the tape roll
2. Loosen the nut
3. Thread the tape spindle in or out to move the tape to the left or right on the arm.
4. Tighten the M18 nut into place when you have set the desired position.



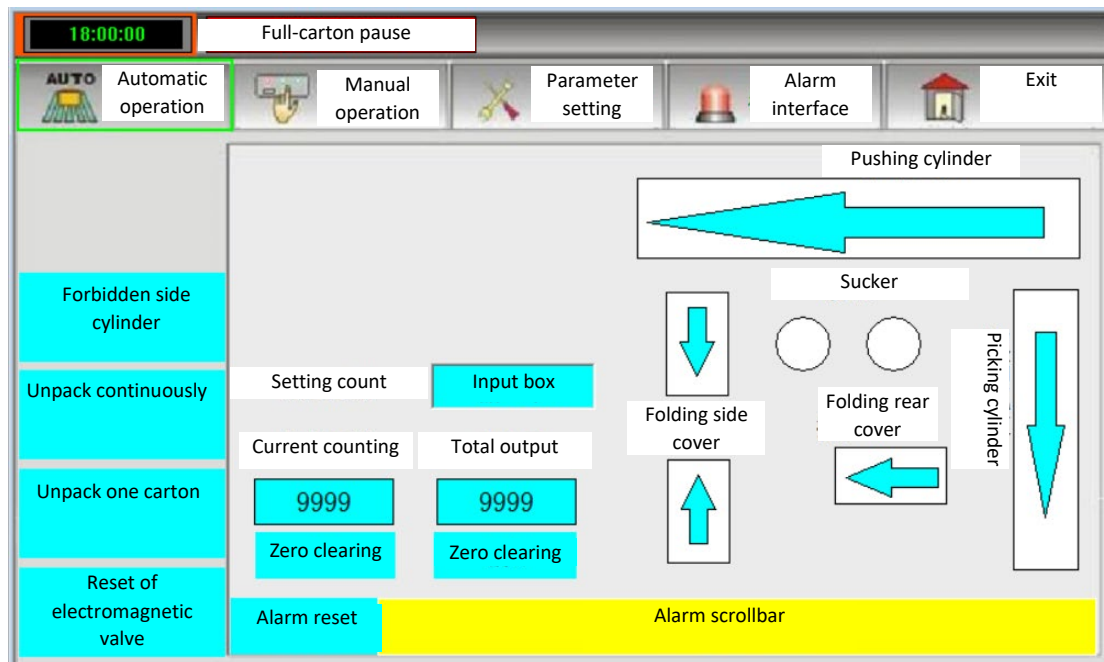
Setting the Tape Tension

- ✿ The tape applicators will come to you already adjusted. You may find that over time the tension needs to be adjusted.
- ✿ To loosen or tighten the tension of the tape applicators use the nut on the end of the tension rod.
- ✿ Turn the nut right to tighten the spring and to the left to loosen.

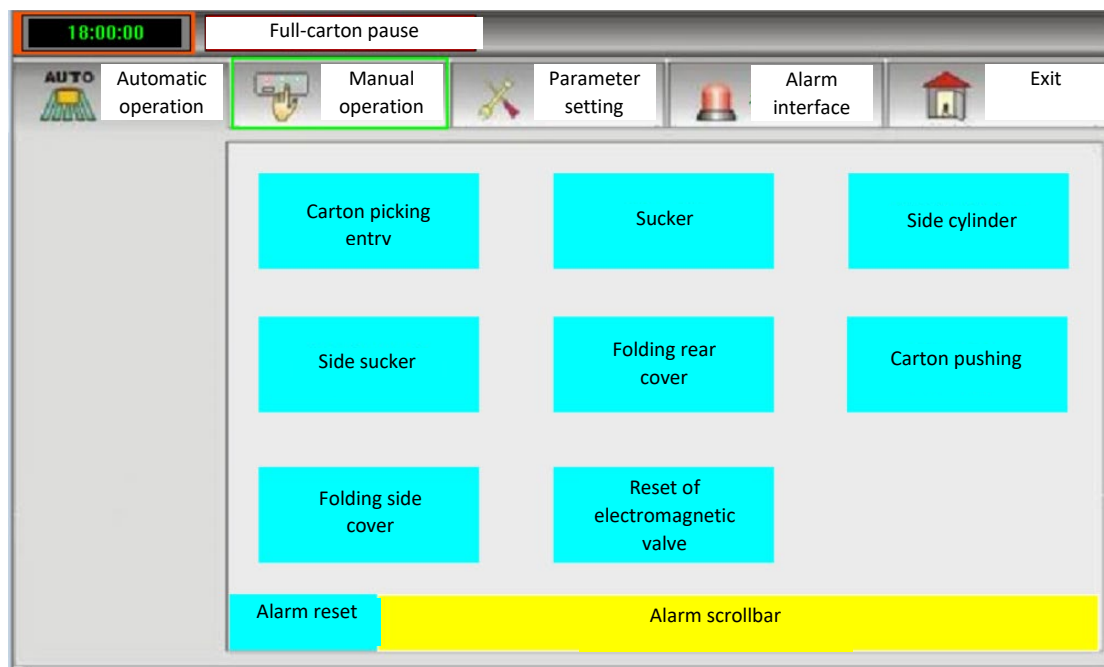


Menu Navigation

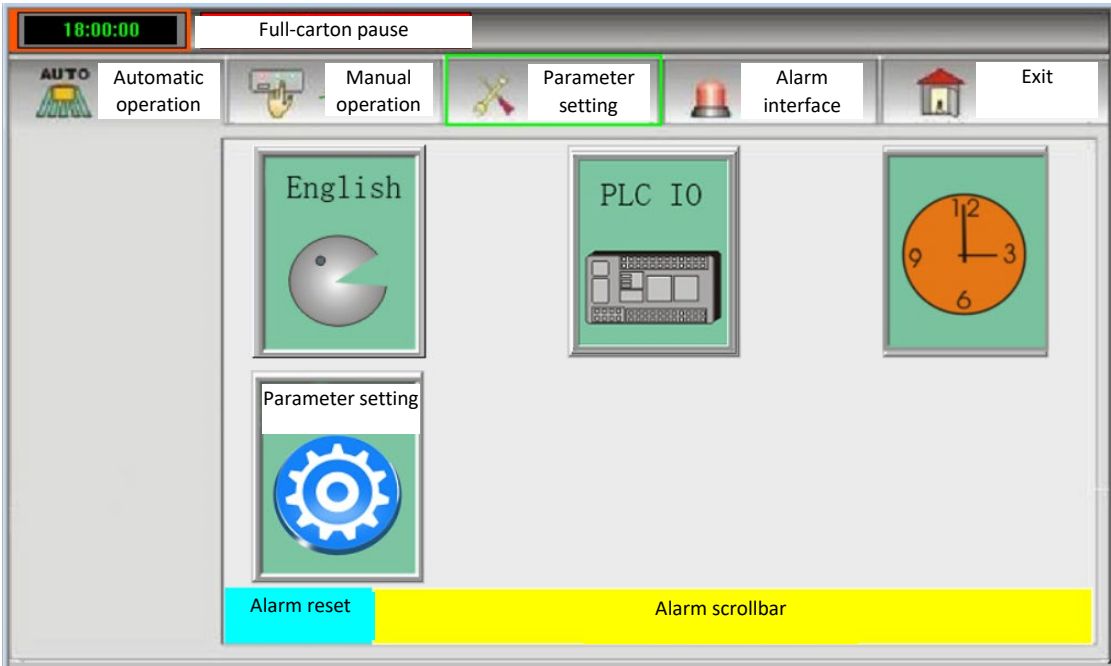
The main menu



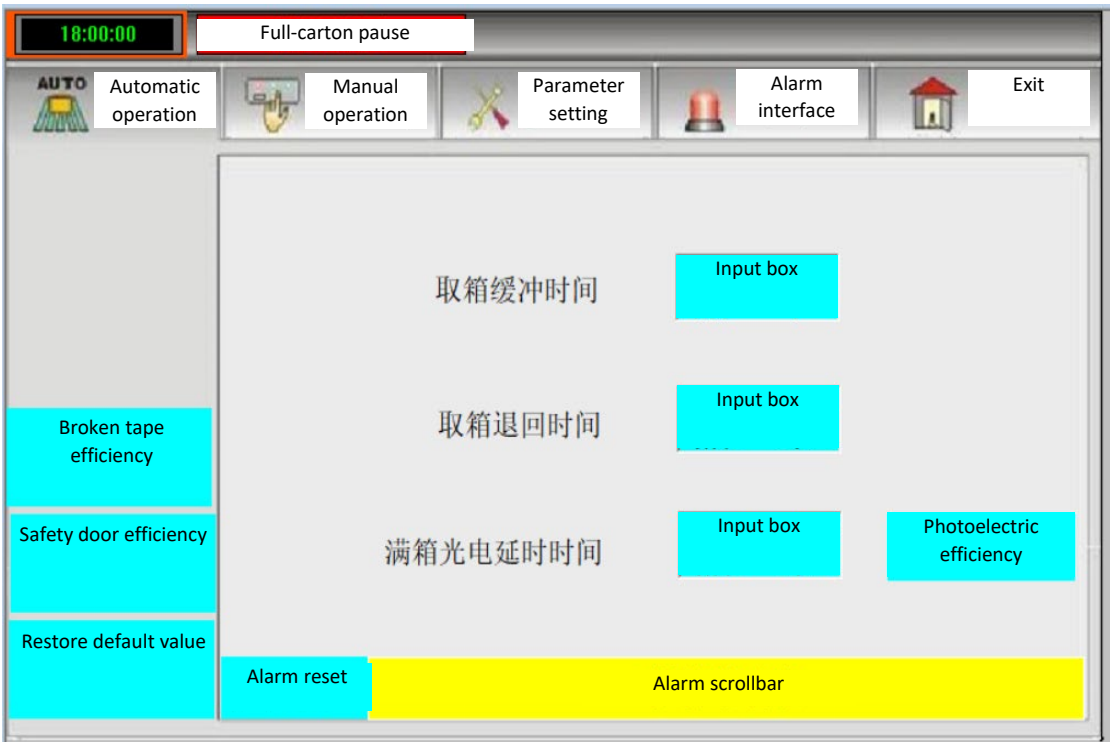
The “Manual Operation” menu allows for the individual operation of components.



Settings



Advanced settings



Alarms

18:00:00

Full-carton pause

AUTO

Automatic operation

Manual operation

Parameter setting

Alarm interface

Exit

日期	时间	报警描述

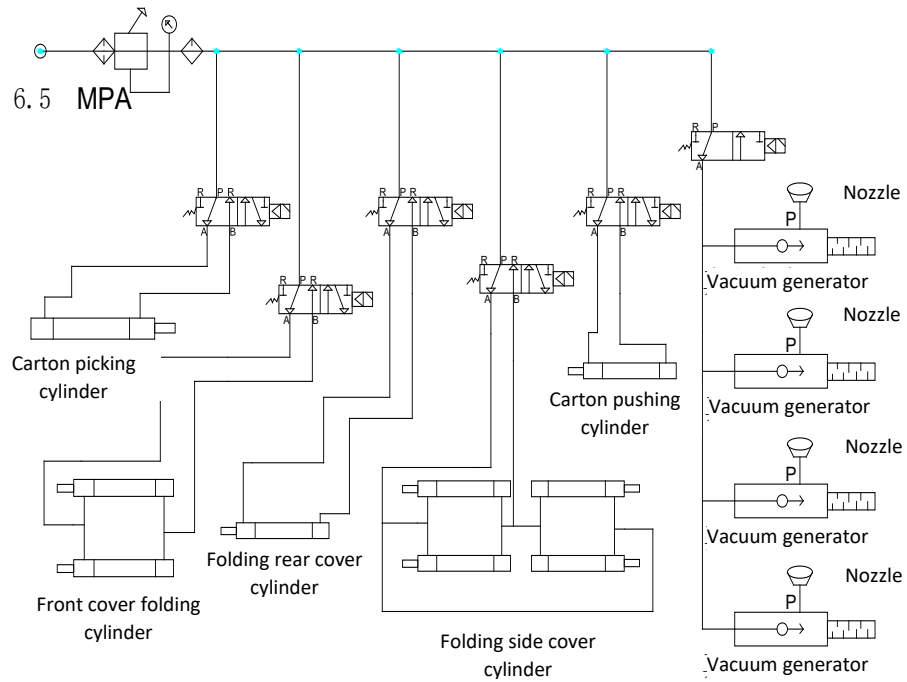
Alarm reset

Alarm scrollbar

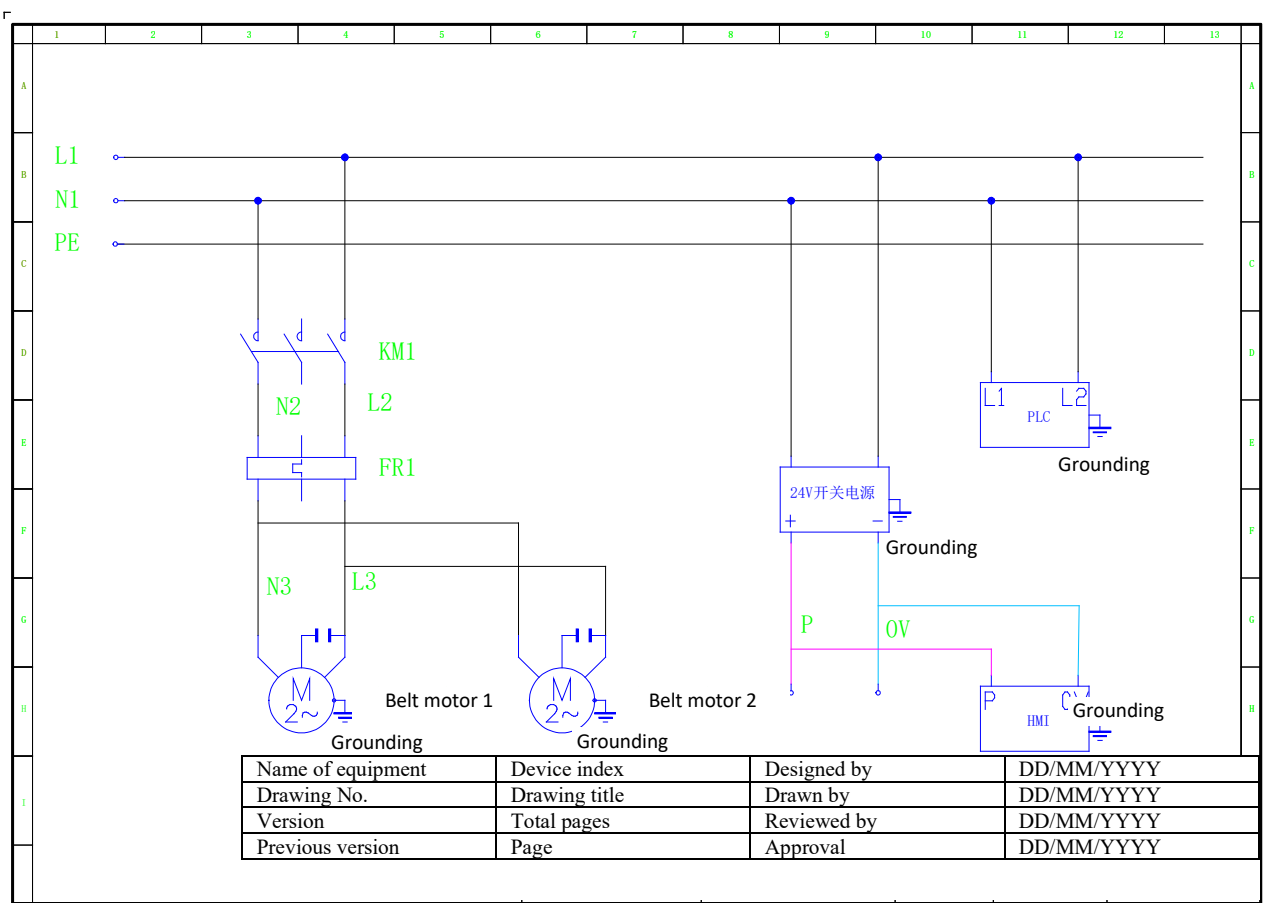
Pneumatic & Electrical Schematics

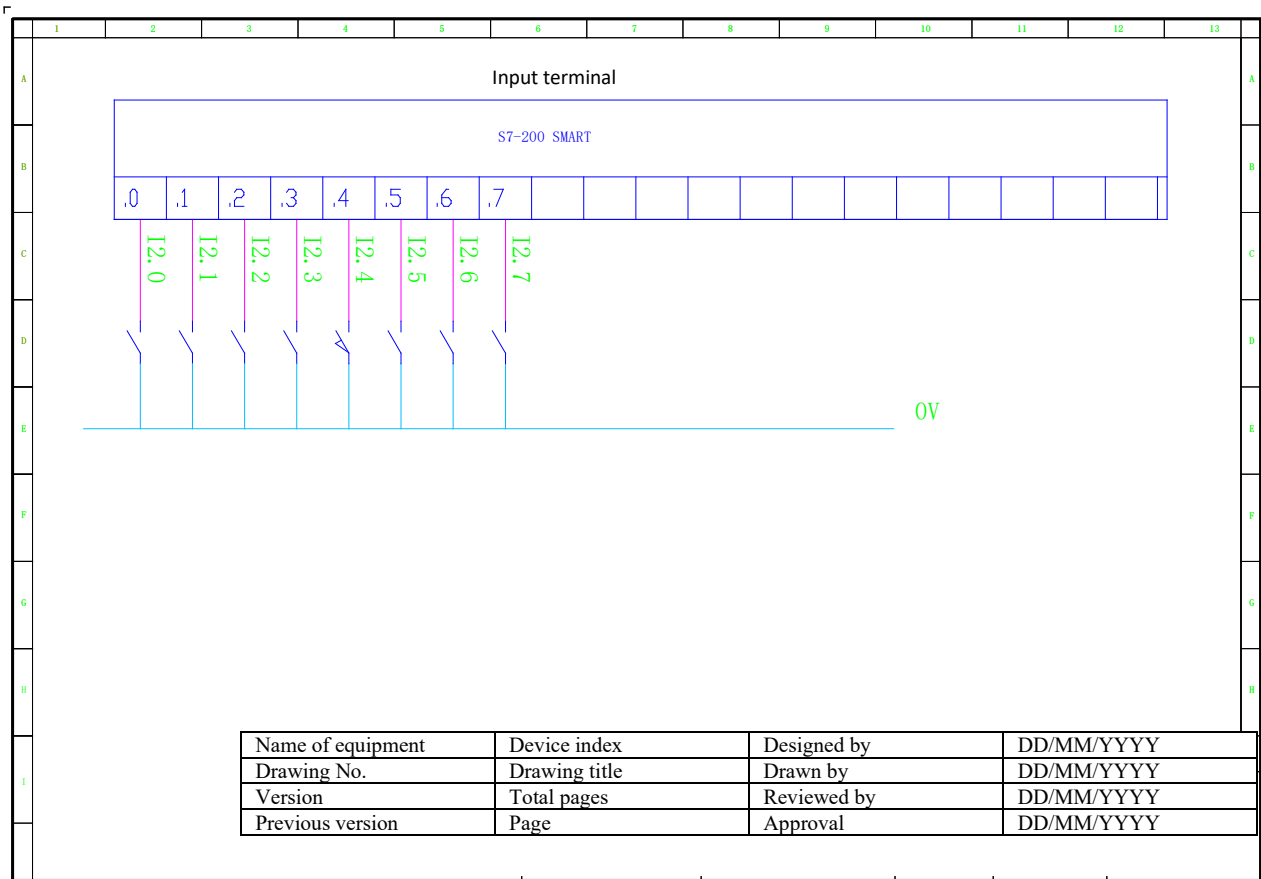
Air Line Schematic

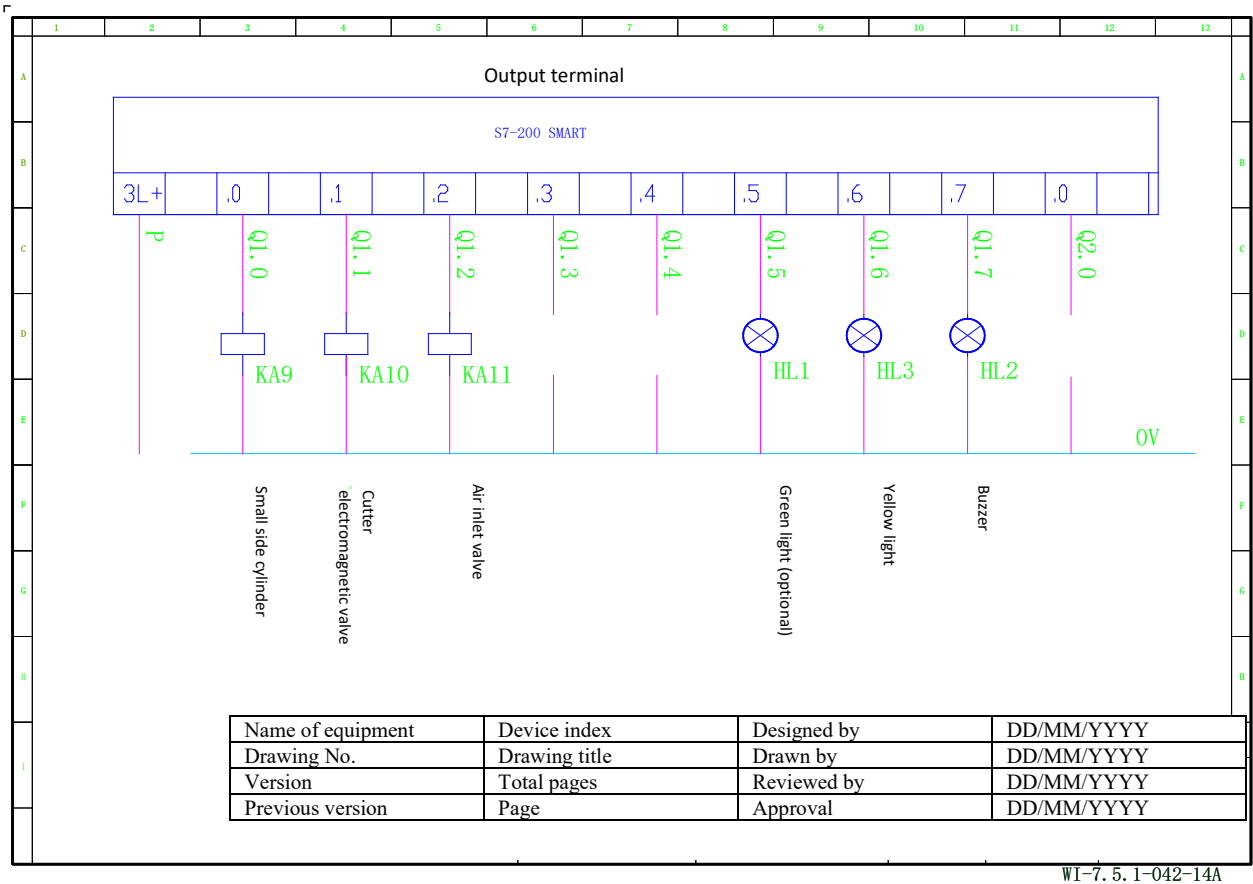
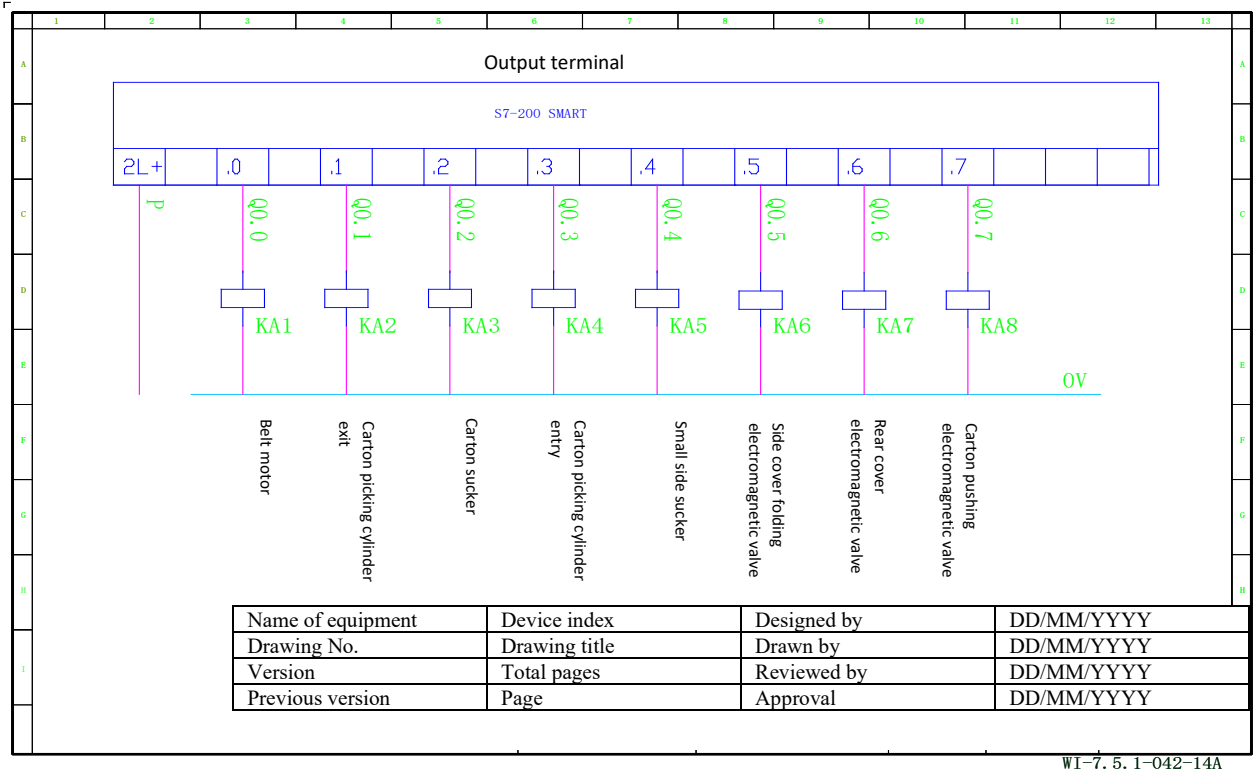
Air Pressure 5-6kg/cm²

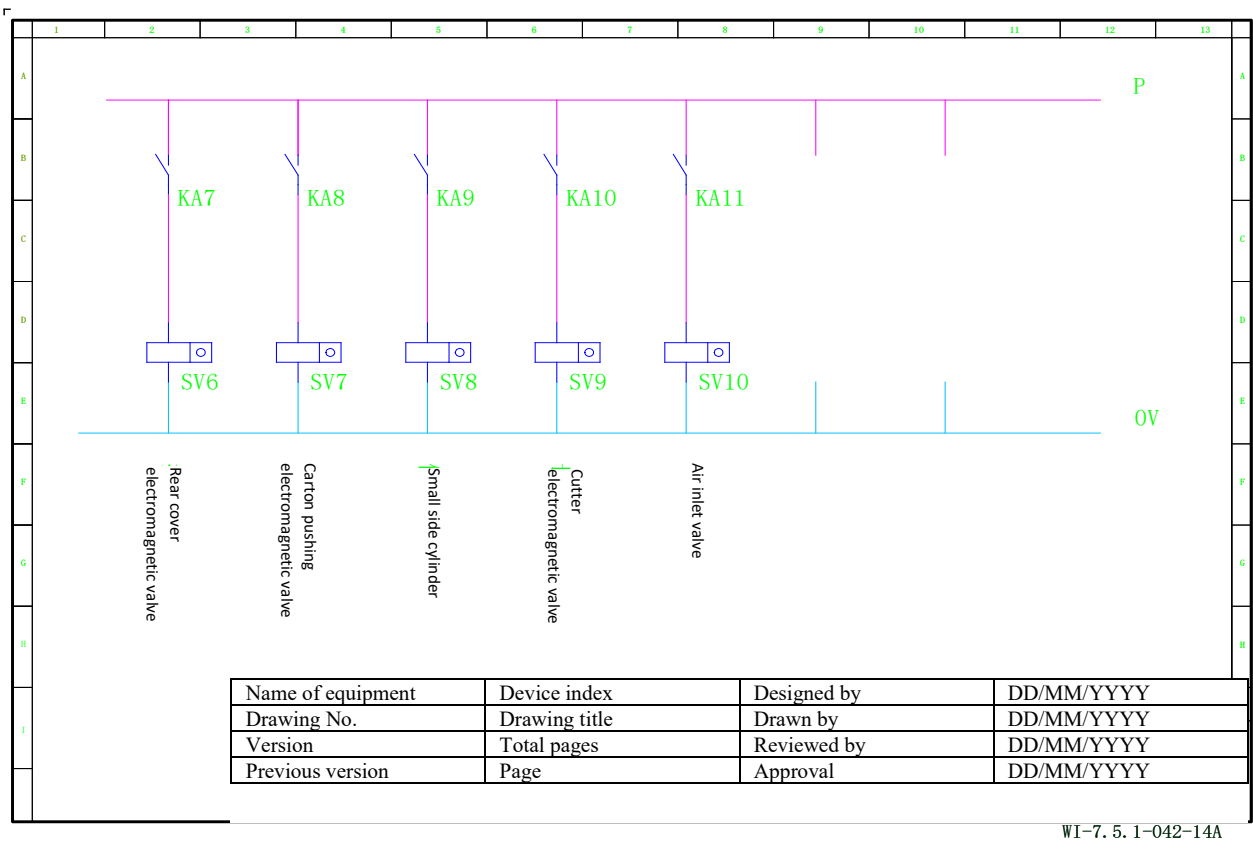
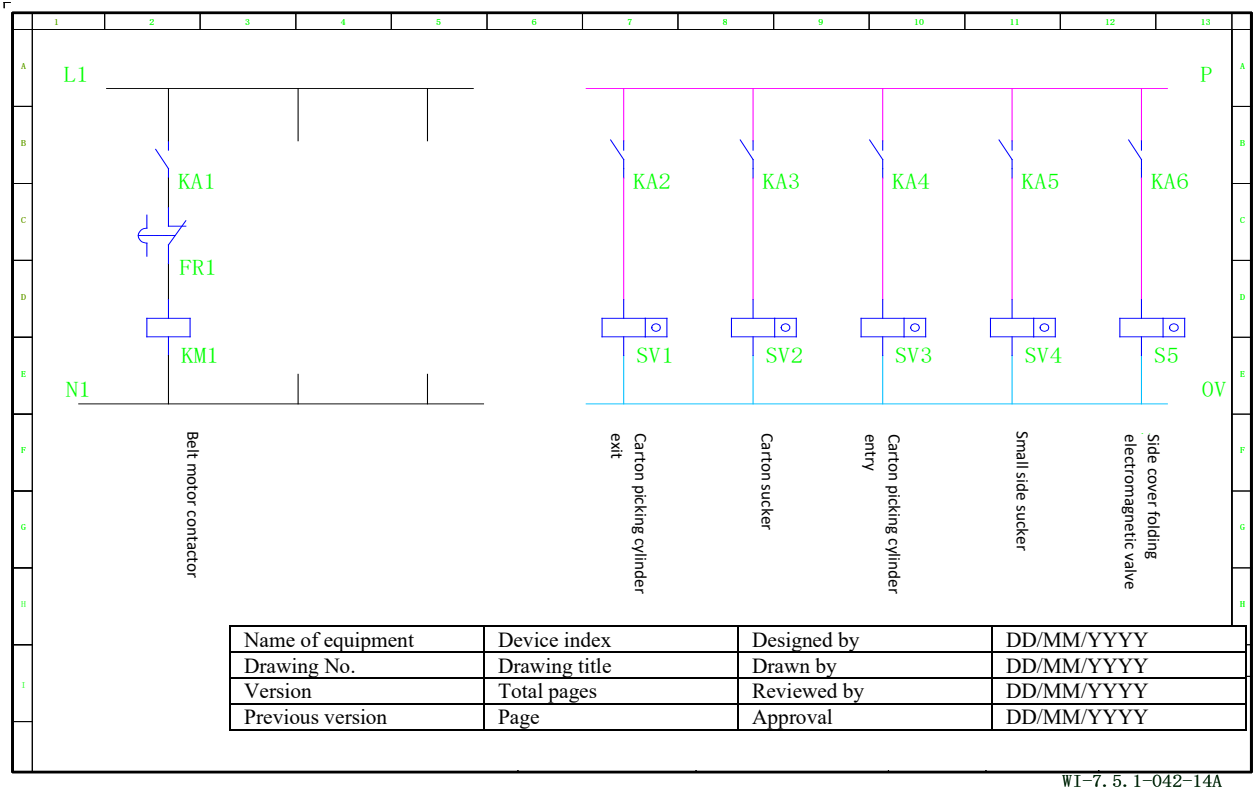


Electrical



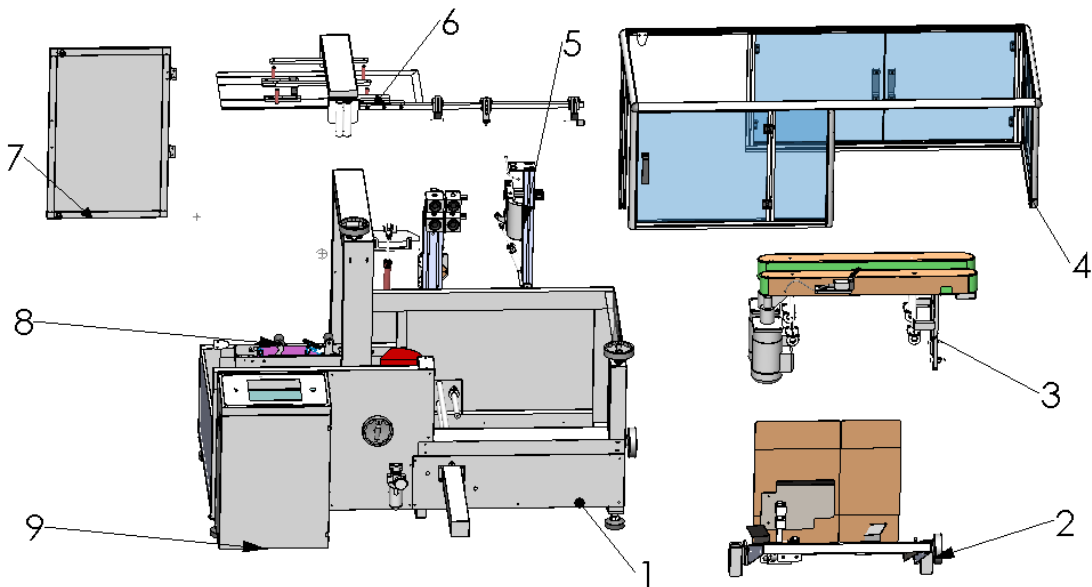






Exploded Views

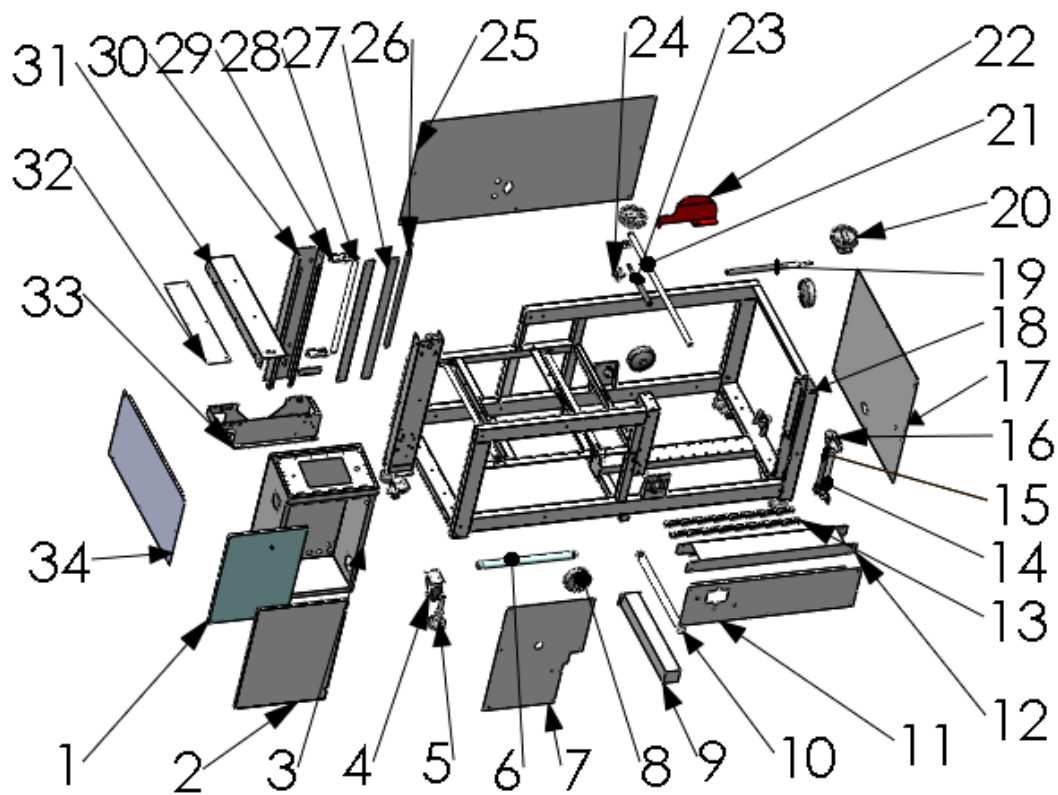
Main body



Parts List

S/N	Part No.	Name	No.	Quantity	Remarks
1		Main frame		1	
2		Trough mechanism		1	
3		Belt conveying mechanism		1	
4		Shield		1	
5		Carton picking and molding mechanism		1	
6		Carton pressing and adjusting mechanism		1	
7		Replace the tape door.		1	
8		Tape sticker		1	
9		Electric box		1	

Main frame and electric box

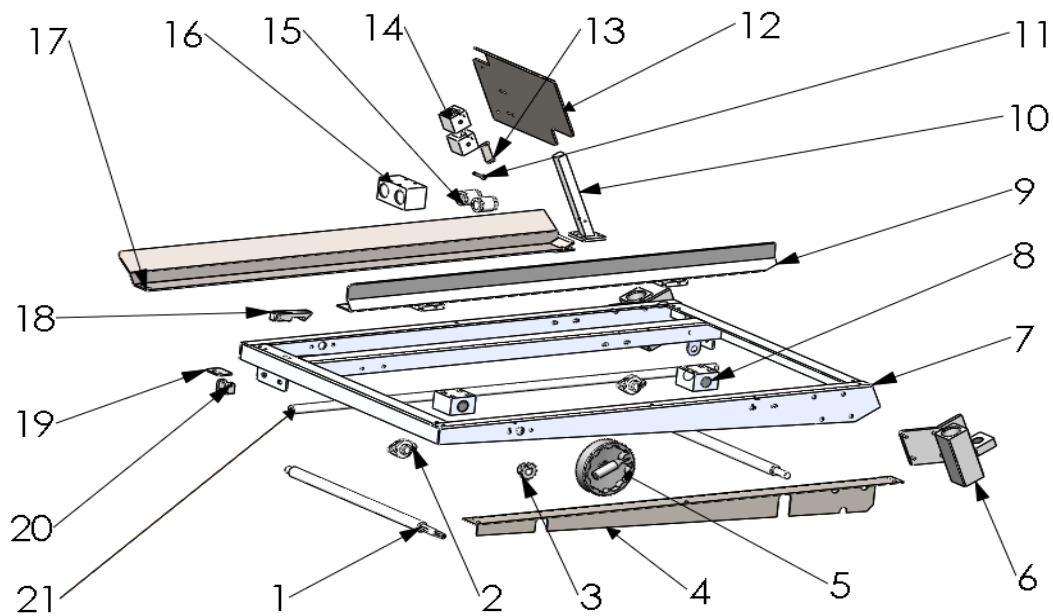


Parts List

S/N	Name	No.	Quantity	Remarks
1	Switch panel		1	
2	Electric box door		1	
3	Electric box		1	
4	Casters		4	
5	Foot cup		4	
6	Cylinder		1	
7	Cover plate		1	

8	Hand wheel		5	
9	Cover plate		1	
10	Cylinder		1	
11	Cover plate		1	
12	Chain cover		1	
13	Guide rail		2	
14	Trough guide rod		2	
15	Left and right lifting screw of trough		2	
16	Gear	Modulus 1 teeth 50 axis 12	2	
17	Blanking plate		1	
18	Main frame		1	
19	Carton block adjusting screw		1	
20	Gear	Modulus 1 teeth 18 axis 12	2	
21	Guide shaft		2	
22	Front cover plate folding		1	
23	Carton picking adjusting screw		1	
24	KFL001, KFL002		4/10	
25	Rear blanking plate		1	
26	Lifting threaded rod		2	
27	Cover plate		4	
28	Guide rod		2	
29	Stator		4	
30	Pillar		2	
31	Cover plate		1	
32	Upper cover of Chain		1	
33	Mandrel rack		1	
34	Cover plate on the left side		1	

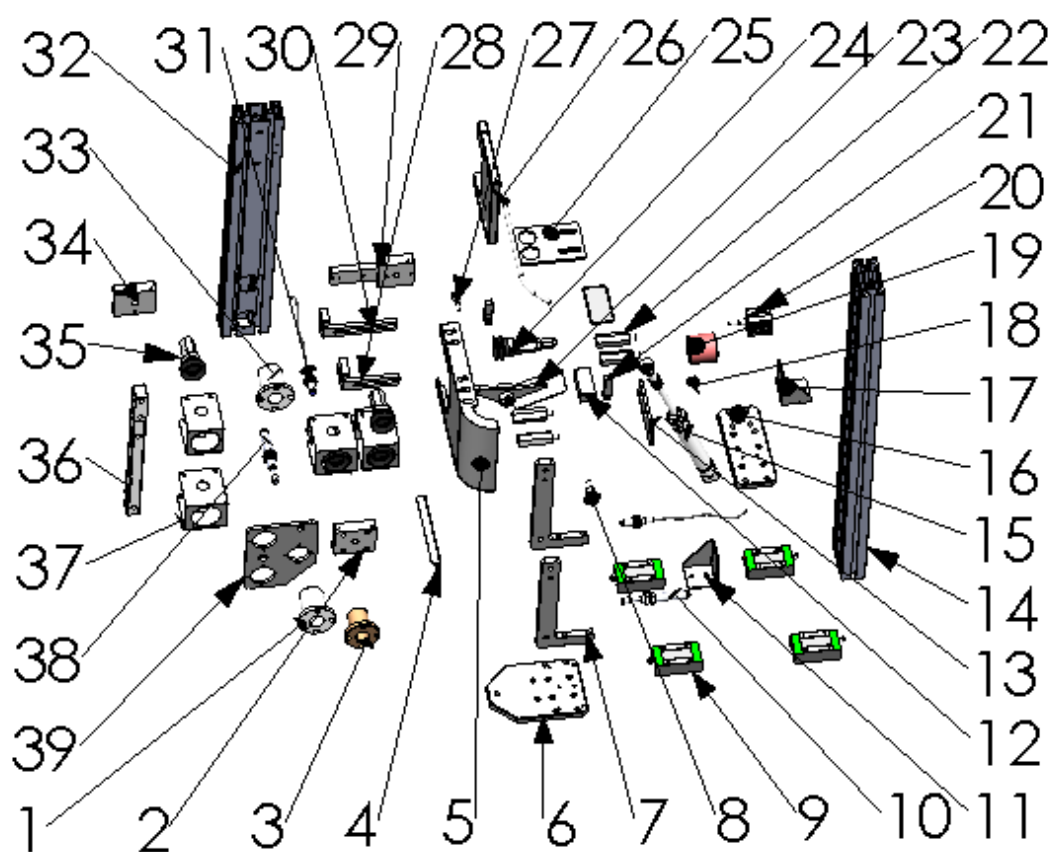
Loading Deck



Parts List

S/N	Name	Model	Quantity	Remarks
1	Left and right threaded rods of trough		2	
2	Bearing		4	
3	Chain wheel		2	
4	Small cover plate of rack		1	
5	Internal corrugated hand wheel		1	
6	Pillar sliding block of trough		2	
7	Trough rack		1	
8	Left threaded tube of trough		2	
9	Active guide plate of trough		1	
10	Carton pressing rod		1	
11	Inner hexagonal bolt		1	
12	Trough pressing plate		1	
13	U-shaped gasket		2	

14	Square adjusting iron		1	
15	Linear bearing		2	
16	Trough sliding block		1	
17	Trough fixed guide plate		1	
18	Fixed block		1	
19	Cushion block		2	
20	Fixed block		1	
21	Sliding shaft for carton pressing		2	

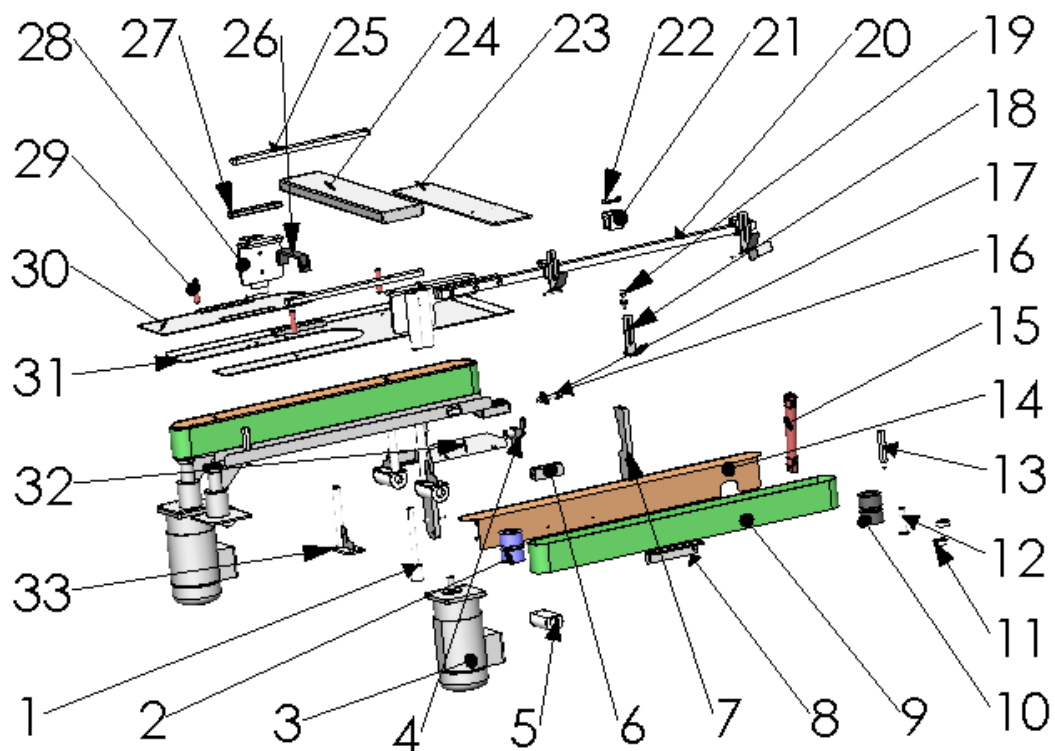


Parts List

S/N	Name	Model	Quantity	Remarks
1	Linear bearing		2	
2	Right fixed block		4	
3	Carton picking adjusting nut		1	
4	Support chain fixed block		1	
5	Guide plate		1	
6	Fixed block		1	
7	Fixed block		2	
8	Positioning cylinder joint		1	
9	Sliding block		4	
10	Oil buffer		2	
11	Limit block		1	
12	Cushion block		1	
13	Cylinder fixing flat		1	
14	Fixed block		1	
15	Cylinder		1	
16	Fixed block		1	
17	Buffer fixed block		1	
18	Bearing		6	
19	Carton block adjusting nut		1	
20	Cylinder		1	
21	Right fixed block		2	
22	Carton pushing cylinder joint		4	
23	Folding rear cover plate		1	
24	Vacuum sucker		1	
25	Adjusting plate		1	
26	Fixed plate		1	
27	Shaft center		1	
28	Short fixed block		1	

29	Left movable block		2	
30	Long fixed block		1	
31	Space switch		2	
32	Fixed block		1	
33	LM25UU		2	
34	Upper right fixed block		1	
35	Vacuum sucker		4	
36	Height adjusting block		1	
37	Guard plate		4	
38	Oil buffer		2	
39	Fixed block		1	

Conveyor Belts

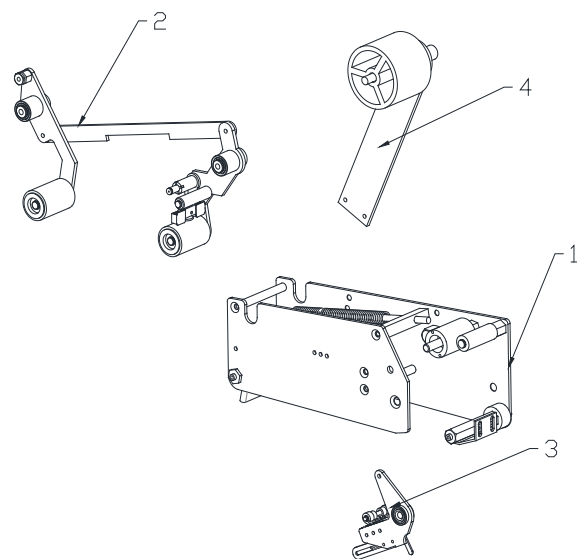


Parts List

S/N	Name	Model	Quantity	Remarks
1	Driving shaft		2	
2	Driving wheel		2	
3	Motor		1	
4	Side cover folding arm		2	
5	Left and right nuts		4	
6	Strengthening plate		2	
7	Fixed block		2	
8	Travel switch		1	
9	Sealing belt		2	
10	Driven wheel		2	
11	Bearing		8	
12	Driven shaft		2	
13	Belt support bar		4	
14	Belt cover		2	
15	Cylinder		2	
16	Bearing		6	
17	Shaft center		2	
18	Carton blocking sheet		3	
19	Carton blocking pillar		3	
20	Adjusting fixed block		1	
21	Adjusting block		3	
22	Carton blocking sheet		3	
23	Carton pressing plate fixed block		1	
24	Carton pressing plate fixed plate		1	

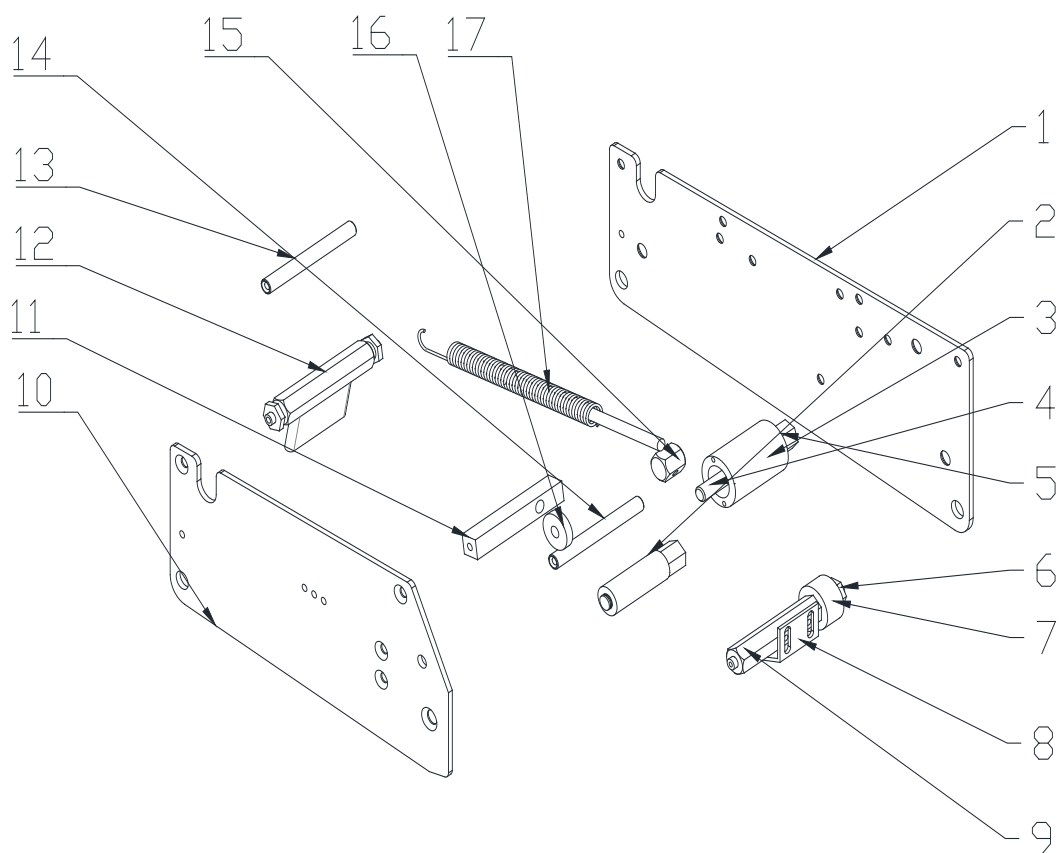
25	Carton pressing connecting plate		2	
26	Handle		5	
27	Pressing block		2	
28	Nut connecting block		2	
29	Carton pressing adjusting shaft		4	
30	Pressing plate		1	
31	Upper pressing plate		1	
32	Cover plate on the folding side		1	
33	Driving rack support pillar		4	

Tape Head

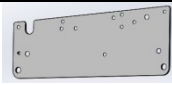



Parts List

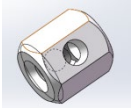
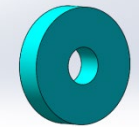

S/N	Name	Quantity	Remarks
1	Mandrel rack	1	
2	Swing arm	1	
3	Cutter	1	
4	Tape holder	1	

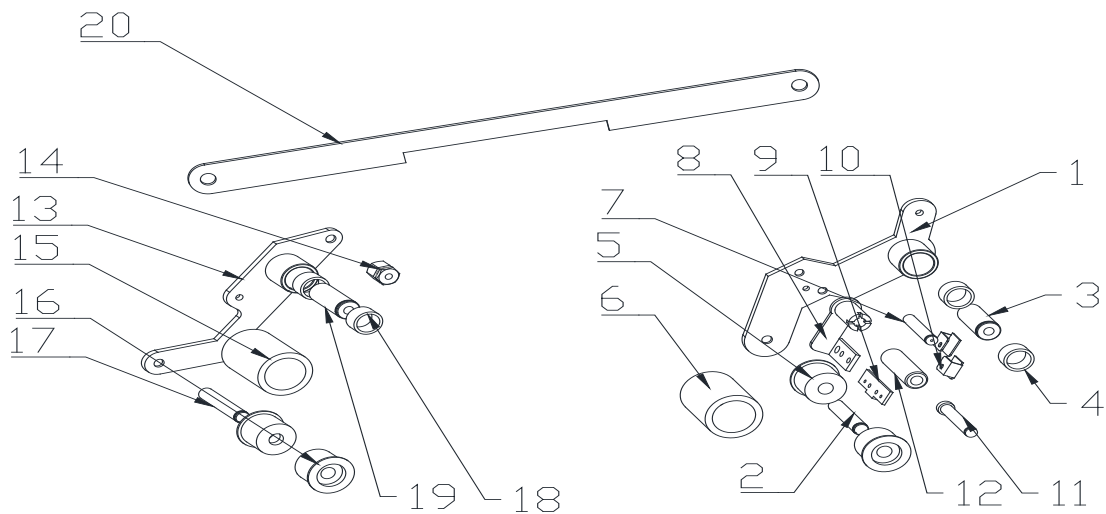


Parts List


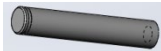

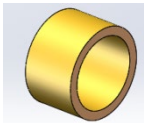
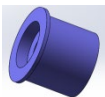
S/N	Graph	Name	Quantity	Remarks
1		Left panel (large) of mandrel	1	
2		PE guide wheel set of mandrel	1	PE guide wheel shaft and PE guide wheel

3		One-way small knurl wheel of mandrel	1	
4		One-way small knurl wheel axle of mandrel	1	
5		One-way bearing HF1616 of mandrel	1	
6		Hexagonal threaded axle of mandrel	1	
7		Mandrel catch wheel	1	
8		Mandrel front guide plate	1	
9		Front pivot axle of mandrel	1	
10		Right panel of mandrel	1	
11		Square locking axle of main tension spring of mandrel	1	
12		Mandrel brush set	1	
13		Mandrel panel locked axle	1	
14		Mandrel panel locked axle	1	



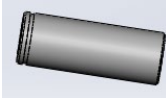
15		Adjusting hexagon prism T2-24 of mandrel tape sticker wheel	1	
16		Mandrel catch wheel	1	
17		Mandrel tension spring	1	

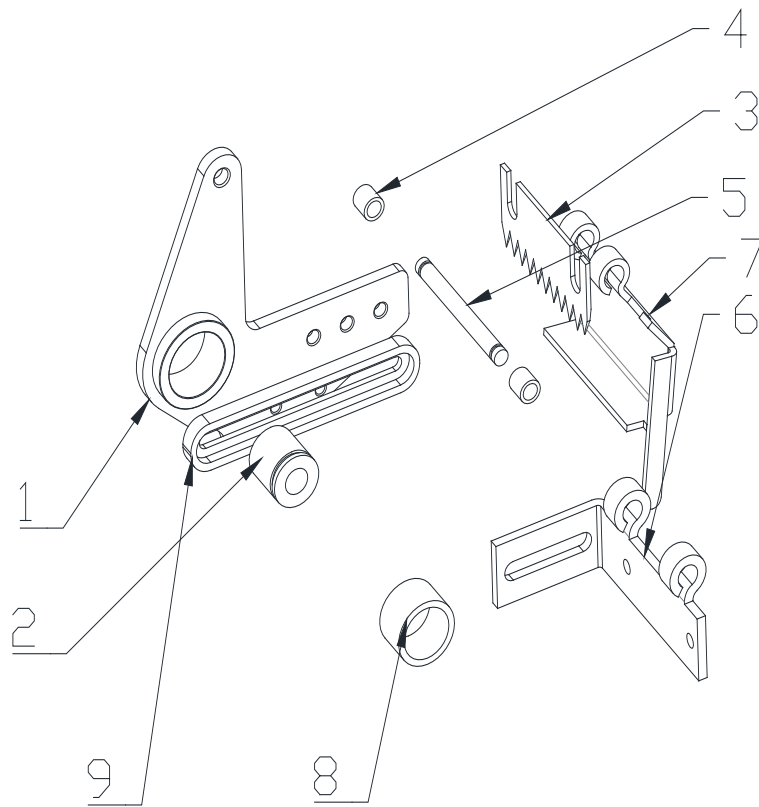


Parts List


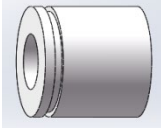
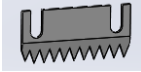
S/N	Graph	Name	Quantity	Remarks
1		Mandrel front swing arm assembly welding	1	
2		Central spindle of mandrel tape sticker wheel	1	
3		Forward and backward swing fixed axle of mandrel	1	
4		Forward and backward swing cutter copper bush of mandrel	2	
5		Non-porous chock plug of mandrel	2	

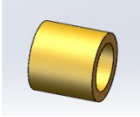

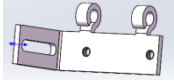
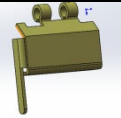
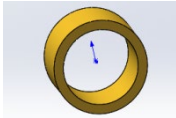
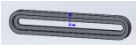
6		Mandrel rubber wheel	1	
7		U-shaped guide seat shaft of mandrel	2	
8		2-inch tape support rack assembly weldment of mandrel	1	
9		Mandrel tape top plate	1	
10		Mandrel cleat (right)	2	
11		Mandrel knurling guide wheel axle	1	
12		Mandrel knurling guide wheel	1	
13		Mandrel rear swing arm assembly welding	1	
14		Locking hexagonal axle of mandrel main tension spring	1	
15		Mandrel rubber wheel	1	
16		Non-porous chock plug of mandrel	2	

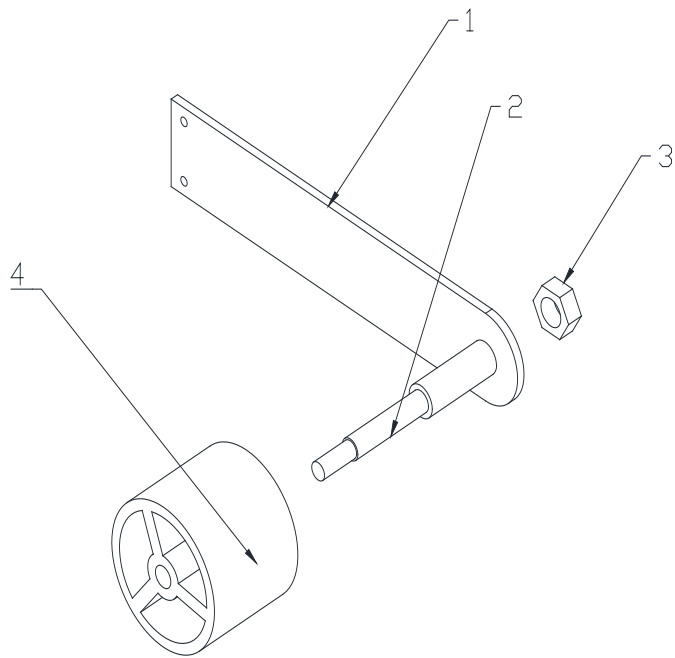
17		Central spindle of mandrel tape sticker wheel	1	
18		Forward and backward swing cutter copper bush of mandrel	2	
19		Forward and backward swing fixed axle of mandrel	1	





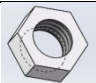

Parts List

S/N	Graph	Name	Quantity	Remarks
1		Mandrel cutter seat	1	
2		Cutter seat fixed axle	1	
3		2-cun old blade	1	

4		Cutter cover copper bush	2	
5		Cutter cover central spindle	1	
6		Cutter rack	1	
7		2-cun cutter cover	1	
8		Forward and backward swing cutter copper bush	1	
9			1	



Parts List

S/N	Graph	Name	Quantity	Remarks
1		Tape holder support chip	1	
2		Tape holder fixed axle	1	
3		Tape holder fixed nut	1	
4		Tape holder (round) and tensioning block	1	